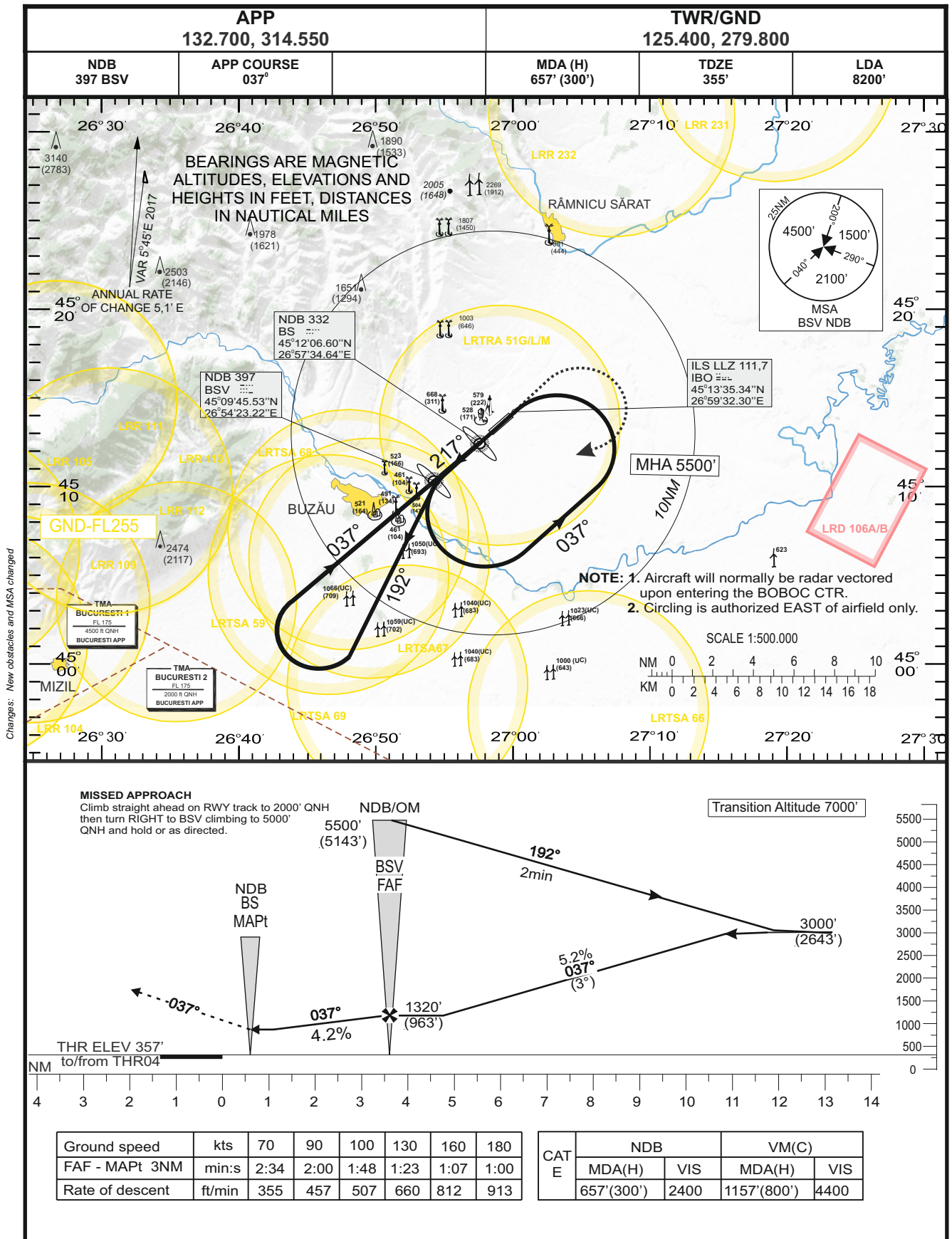


**INSTRUMENT APPROACH CHART**

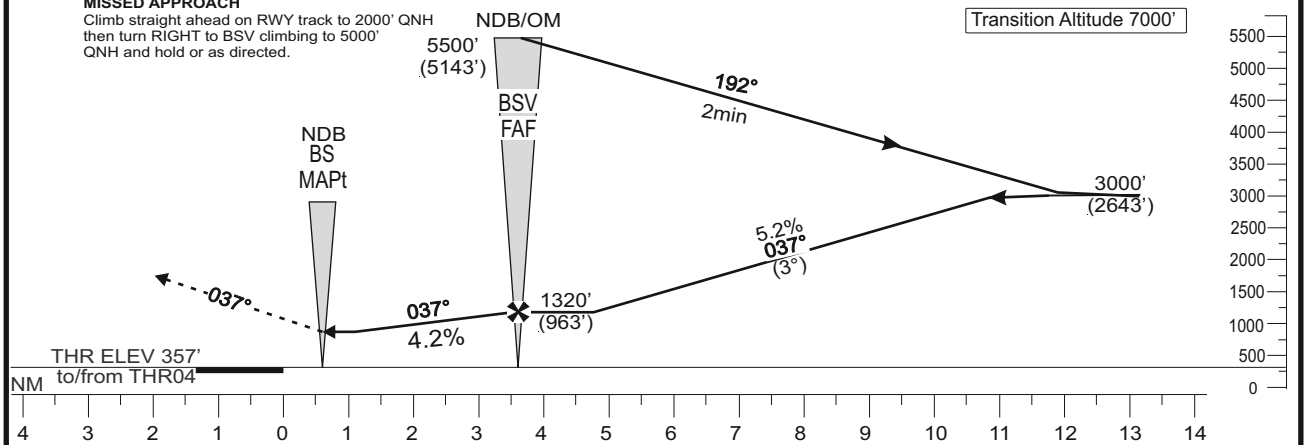
**AERODROME ELEV 351 ft**  
HEIGHT RELATED TO THR 04 - ELEV 357 ft

**BOBOC (LRBO)**  
**NDB RWY 04**  
**CAT E**



**MISSED APPROACH**

Climb straight ahead on RWY track to 2000' QNH then turn RIGHT to BSV climbing to 5000' QNH and hold or as directed.



Ground speed	fts	70	90	100	130	160	180
FAF - MAPt 3NM	min:s	2:34	2:00	1:48	1:23	1:07	1:00
Rate of descent	ft/min	355	457	507	660	812	913

CAT E	NDB		VM(C)	
	MDA(H)	VIS	MDA(H)	VIS
	657'(300')	2400	1157'(800')	4400